

U.S. POSTAGE
PAID
PHILADELPHIA, PA
PERMIT NO. 6405
ZIP CODE 19104



"AND THE ENVELOPE,
PLEASE..."

two new initiatives

Funded through
The William Penn Foundation

Infill Philadelphia

A special initiative to generate innovative design solutions for community revitalization, help local and state leaders re-envision Philadelphia's neighborhoods, and demonstrate the value of good design.

Infill Philadelphia will kick off in January 2007 with a focus on neighborhood commercial corridors. Three design firms and CDCs will collaborate on design strategies to enhance buildings, lots, and public space on neighborhood shopping streets.

Cosponsored by LISC Philadelphia.

Excellence in Design

A demonstration program of the Pennsylvania Housing Finance Agency, promoting design excellence and innovation in affordable housing and developed with assistance from the Community Design Collaborative, the Pittsburgh Community Design Center, Penn State's Hamer Center for Community Design, and Deane Evans, author of the AFFORDABLE HOUSING DESIGN ADVISOR.

See www.phfa.org for information on construction and preliminary design grants.

Help Habitat for Humanity Philadelphia build Stiles Street! The Community Design Collaborative will be organizing a work day – especially for Collaborative volunteers – in 2007.

green light for stiles street

Collaborative Helps Habitat for Humanity Philadelphia Pursue Sustainable Design

The 4200 block of Stiles Street has promise. Anchored by a string of handsome brick rowhouses, the East Parkside block contains enough vacant land to build ten new homes. Last year, Habitat for Humanity Philadelphia approached the Community Design Collaborative to study alternatives for new housing for Stiles Street. Wallace Roberts and Todd, LLC (WRT), joined by the Energy Coordinating Agency of Philadelphia, volunteered for the project.

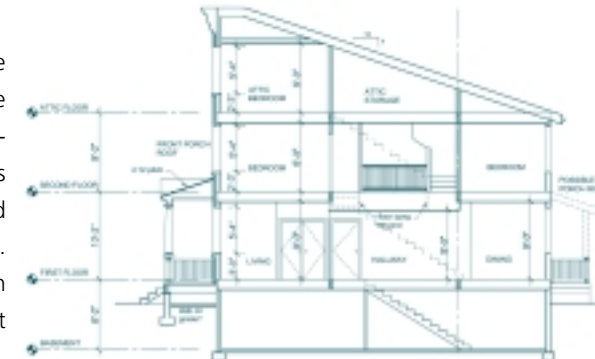
Habitat for Humanity Philadelphia hopes the Stiles Street project will lead to more green affordable housing by other Habitat affiliates. Maarten Pesch, AIA of WRT, notes, "Habitat for Humanity is actually one of the largest residential developers in the country. It may have a much farther reach than just for this site." WRT has continued to work with Habitat on the Stiles Street housing project.

REACHING CONSENSUS WITH THE COMMUNITY

Habitat involved the East Parkside Residents' Association in the development of a conceptual design for the new housing. The community wanted the homes to fit the Victorian-era neighborhood. But nationally, Habitat's most common unit design is the detached two-story home with a sloped roof and wood frame construction – safe and easy for volunteer crews to build. The Collaborative project team developed a rowhouse design with some extras, such as brick facades and front porches, that can still be built primarily by volunteers.

AFFORDABLE GREEN HOUSING FOR HABITAT

Thanks to the efforts of the Energy Coordinating Agency and the Delaware Valley Green Building Council, Stiles Street will be



RAISING THE RESOURCES TO BUILD

Habitat for Humanity Philadelphia plans to build seven new homes, based on WRT's conceptual design. Jon Musselman, Director of Project Planning for Habitat for Humanity Philadelphia, estimates that Habitat's commitment to green construction and contextual design for Stiles Street has increased the cost of building by 25% per unit. But he notes that "in keeping with Habitat's core value of being good stewards in the community we feel it is the right thing to do." Habitat expects to break ground on Stiles Street in March 2007.

PROJECT TEAM

Wallace Roberts & Todd, LLC

Maarten Pesch, AIA
Jean-Pierre Brokken
Harsha Desai
Maria Elosua
Erin Monaghan

Energy Coordinating Agency of Philadelphia

Scott Wagner
ENERGY ANALYST

Habitat for Humanity Philadelphia

Jon Musselman
DIRECTOR OF PROJECT PLANNING



one of a handful of affordable housing developments registered for the LEED for Homes Demonstration Project, a voluntary program to test sustainable design standards for housing developed by the United States Green Building Council.

COMMUNITY DESIGN
• COLLABORATIVE •
 OF AIA PHILADELPHIA

117 SOUTH 17TH STREET, PHILADELPHIA, PA 19103
 phone 215. 587. 9290 fax 215. 587. 9277
 cdesignc@cdesignc.org www.cdesignc.org

BUILDING NEIGHBORHOOD VISIONS AS COMMUNITIES
 AND DESIGN PROFESSIONALS WORK TOGETHER

The Community Design Collaborative of AIA Philadelphia provides non-profits with preliminary architecture, landscape architecture, engineering, and planning services; promotes best practices in community development; and offers design professionals a unique way to volunteer their skills in service to community.

Board of Directors

Michael J. Paul, PE
 Lisa Armstrong, AIA, LEED AP

CO-CHAIRS

Darwin R. Beauvais, Esq.
 Alice K. Berman, AIA
 Patrice A. Carroll
 Cecelia Denegre, AIA, IIDA
 Daniel K. Garofalo, AIA
 Mami Hara, ASLA, AICP
 Tina R. Makouljian, Esq.
 Paul Marcus
 Thomas W. Nason, II
 Laura Raymond
 Brad R. Segall
 Margot C. Sklar
 Susan F. Smith
 Michael Spain
 Alan S. Urek, AICP
 Rafael M. Utrera, AIA
 Richard W. Winston, AIA
 Roy Yaffe, Esq.

Advisory Council

Patricia Wilson Aden
 Omar H. Blaik
 Daniel E. Bosin, AIA
 Dr. Happy Craven Fernandez
 Alan Greenberger, AIA
 Kevin R. Hanna
 James E. Hartling
 Donald R. Hinkle-Brown
 Ronald Hinton, Jr.
 Rev. Robin Hynicka
 Barbara Kaplan
 Howard Lebold, AIA
 Amy B. Lempert
 Nora Lichtash
 Donald R. Matzkin, AIA
 Patricia M. Patrick
 Phoebe Resnick
 George Rubin
 Susan A. Segal
 Paul Steinke
 Andrew P. Toy

Staff

Elizabeth K. Miller
 Linda C. Dottor, AICP
 Heidi Segall Levy, AIA
 Carryn Maslowski
 Emily Stromberg

John Claypool, AIA, AICP
EX-OFFICIO

LEARN MORE!

Visit us online at www.cdesignc.org

news+updates

Mami Hara, ASLA, AICP, has joined the Collaborative's Board of Directors. Mami, a Senior Associate with Wallace Roberts & Todd, LLC, will serve as co-chair of the Projects Committee.

Farewell to Richard Ashworth, AIA, who has stepped down from the board. Richard will continue to serve on the Projects Review and Selection Committee.

The Collaborative extends a warm welcome to its two new staff members: Carryn Maslowski, Program Associate, and Emily Stromberg, Design Fellow. Carryn will manage Infill Philadelphia and other Collaborative programs. Emily will assist with project and volunteer management.

Two of the Collaborative's 2004 preliminary design projects – the Overbrook Environmental Education Center for JASTECH Development Services and Haven in the Goodlands for *Centro Nueva Creacion* – were recognized through the Philadelphia Water Department's Stormwater Best Management Practices Recognition Program. The project team for the Overbrook Environmental Education Center was also invited to present their work at the Urban Watersheds Revitalization Conference at Villanova University in May 2006.

Interface Studio LLC has received AIA Philadelphia's 2006 Silver Medal for its design for twenty units of affordable, sustainable housing in North Philadelphia. The Silver Medal recognizes the best unbuilt project of the year. The design prototype for the project was developed for *Asociacion de Puertorriquenos en Marcha (APM)* in 2005 as part of the Collaborative's Affordable Infill Housing Design Challenge. Interface Studio continued its work on the project through a grant from the LISC (Local Initiatives Support Corporation) and The Home Depot Foundation *Healthy and Efficient Neighborhood Homes Partnership*.

FUNDERS
 The Community Design Collaborative thanks the following foundations for their generous support.

- | | |
|---|---|
| AIA Philadelphia | The Philadelphia Foundation |
| Bank of America Charitable Foundation | Philadelphia Neighborhood Development Collaborative |
| Citizens Bank | PNC Foundation |
| Claneil Foundation | Samuel S. Fels Fund |
| Connelly Foundation | Service Point USA |
| Dolfinger McMahon Foundation | The Union Benevolent Foundation |
| Drumcliff Foundation | Wachovia Foundation |
| Henrietta Tower Wurts Memorial | Walter J. Miller Trust |
| Office of Housing and Community Development | The William Penn Foundation |

2006 COLLABORATIVE VOLUNTEER

AWARDS

Outstanding Firm

Christopher Allen – Julie Regnier
Landscape Architecture and Planning
 Christopher Allen, RLA; Julie Regnier, RLA; Nathan Dort

Outstanding Supporting Firm

Becker Frondorf
 John Frondorf

Outstanding Team

Erick Bach; Mauricio Gomez; Erin McLaughlin, RA; Richard Roark, RLA; Sophie Robitaille, RLA; Rick Trailies

Outstanding Volunteers

Joanne Aitken, AIA	Emma Johnson	Snezana Litvinovic, AIA	Leslie Norvell
Roberto Carretero	Sterling Johnson	Natalie Malawey	Steve Preiss
Jane Cespuquio	Mary Judy	Melissa Marshall	Tess Schiavone
Leesa Conley	David Kane	Tom Monari	

Special Initiative

The Affordable Infill Housing Design Challenge

Francis Cauffman Foley Hoffmann, Architects
 David Artman; Andrea Marzoff; Aran McCarthy, AIA; Michael Roden; Denise Thompson; Rafael Utrera, AIA; Gary Van Vliet

Interface Studio LLC

Kelly Anderson; Narintorn Narisaranukul; Scott Page; Brian Phillips, AIA

Becker Winston Architects

Jai Agrawal; Jessica McCollom; Brian Szymanick; Richard Winston, AIA

Jody Beck, JURY MODERATOR

Recognizing Extraordinary Work on Projects Initiated in 2005

individuals

VOLUNTEER

Join a project team

MENTOR

Act as advisor to a project team

ADVISE

Serve on a nonprofit board or task force referred by the Collaborative

PROJECTS REVIEW COMMITTEE

Participate in peer reviews of projects

PROGRAMS COMMITTEE

Develop publicity, programs, and events

DONATE

Support the Collaborative's work through an individual, tax-deductible contribution

get involved

firms

VOLUNTEER

Organize and lead an in-house project team

REFER

Refer nonprofits to the Collaborative for technical assistance

PLAY BALL!

Sponsor a lane at the Bowling Ball fundraiser

nonprofits

UTILIZE OUR RESOURCES

501(c)(3) nonprofit organizations in greater Philadelphia are eligible for our grants of preliminary design services

TAKE A D-TOUR ON YOUR WAY HOME TONIGHT

with our new series of design tours, created especially for Collaborative volunteers and friends. Get to know the people and places behind Collaborative projects. And top off the evening with drinks at a local pub.

Introducing Collaborative Design Tours

On September 27, the Collaborative had its inaugural D-TOUR with a standing-room-only crowd hosted by Fairmount CDC. The tour featured an informal talk and walking tour by Lori Salganicoff, Executive Director of Fairmount CDC, and Tim Kerner, Principal of Terra Studio and Collaborative volunteer, followed by drinks and conversation at London Grill.



Lori Salganicoff explains recent streetscape improvements to the Sunoco Station on Fairmount Avenue.

Have a tour idea or want to help? Contact Linda Dottor at Linda@cdesignc.org.

CELEBRATING

CELEBRATING

"WORKING WITH THE COLLABORATIVE MAKES YOU FEEL LIKE YOU ARE PART OF A GREATER COMMUNITY." – SOPHIE ROBITAILLE, VOLUNTEER

Since 1991, the Community Design Collaborative and its volunteers have supported the facility and community development goals of almost 400 nonprofit organizations. Here are just a few examples of how our pro bono preliminary design services have made good things happen.

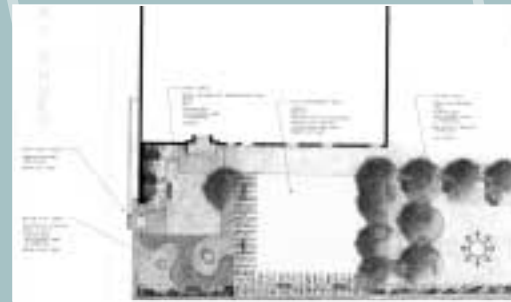
15 YEARS

North Light Community Center

1999

North Light serves nearly 3,000 people through its arts and recreation programs, employment training and emergency support. However, the bleak stretch of blacktop that wrapped around the center did not reflect North Light's positive vibe.

A conceptual landscape plan provided the blueprint for using donated labor and materials to create a welcoming entrance with a water play area, colorful plantings, play equipment, and mosaics, and – when the sun is out – a group of spirited, smiling children.



"It's one thing to have an idea, and it's another to have a gorgeous drawing that shows people the vision."

– Irene Madrak
Executive Director
North Light Community Center

of great

The Preschool Project: Woolston Child and Family Center

2001

The Preschool Project was offered the East Baptist Church in Fishtown as a permanent facility. This provider of affordable childcare and childcare training quickly identified an ideal funding source for the project. But it lacked even the basic site documentation needed to apply.

"There's no question that one of the primary reasons we were able to meet The Preschool Project's ambitious goal for opening this new facility within one year was the Collaborative's early involvement."

– Lisa Armstrong, AIA
AK Architecture, LLC

The Allegheny West Foundation

2002 & 2004

The Allegheny West Foundation is working to fill the gaps on the "Forgotten Blocks" of Garnet, Somerset, and Gratz Streets. The Collaborative's preliminary design work helped Allegheny West communicate its strategy – to rehab vacant homes on healthy blocks and build new, larger single-family homes by combining two or more vacant lots.

before (left) and after



In 2004, the CDC raised \$1.2 million from city agencies and the Pennsylvania Housing Finance Agency to develop nine units of affordable, infill housing, the first phase of an \$11 million neighborhood reinvestment plan. Allegheny West recently received an additional \$423,000 from the 2006 Philadelphia Housing Trust Fund.

"This project can serve as a citywide model for reintegrating vacant lots back into the neighborhood."

– Ronald Hinton
President
The Allegheny West Foundation



PEOPLE, PROJECTS & PLACES

new grants

ABOUT OUR GRANTS

The Community Design Collaborative awards over 30 grants of preliminary design services to nonprofits in the Philadelphia region each year. Collaborative grants offer \$15,000 in *pro bono* preliminary design services on average and are performed by volunteers from the design professions.

Each grant provides a unique scope of services, developed to meet your organization's needs. The scope may include building surveys, building systems assessments, opinions of probable cost, programming and space planning, conceptual design, or renderings. While there is no application fee, nonprofits pay an administrative fee of \$500 at the start of a grant to offset direct costs.

To qualify for a grant, your organization must be classified as a nonprofit corporation, qualified as tax exempt under Section 501(c)(3) of the Internal Revenue Code, and located in Philadelphia, Bucks, Delaware, Chester, Montgomery or Camden Counties.

The Collaborative's grants of preliminary design services help nonprofits identify development strategies, obtain funding, hire consultants, and invest wisely in their facilities and neighborhoods.

The Community Design Collaborative is pleased to announce the following new grants:

AWARDED APRIL 2006

All Saints Parish, Rhawnhurst
Conceptual design for church expansion and accessibility improvements

Friends Neighborhood Guild, Lower North Philadelphia
Master plan for renovation

Greenfield Home & School Association, Center City
The Greening of Greenfield: Feasibility study for a campus park

Neighborhood Interfaith Movement, Germantown
Limited Consultation Services: Conceptual design for Neighborhood Interfaith Movement's relocation

Project H.O.M.E., Lower North Philadelphia
Limited Consultation Services: Community kiosk installation

South of South Neighborhood Association, Southwest Center City
Conceptual design for gateway triangles

Taney Youth Baseball Association, South Philadelphia
Sacks Full of Stars: Conceptual design for recreation center renovation

AWARDED JULY 2006

Audubon Society of Pennsylvania, Strawberry Mansion
Fairmount Park Audubon Center at Strawberry Mansion: Conceptual design for master plan

Byron Story Foundation, Francisville
Creating a Legacy for Our Future Youth: Conceptual design for an alternative education and career center

Friends of the Santore Library, Bella Vista
Conceptual design for a library garden

New Kensington CDC, Kensington
Support for community participation in riverfront master planning process

Northern Home for Children, Roxborough
Feasibility study for renovation of existing building as childcare facility

Philadelphia Neighborhood Development Collaborative, Various Locations
Conceptual design assistance for the Middle Markets Initiative

Philadelphia Neighborhood Housing Services, Carroll Park
Conceptual design for affordable infill housing

Want to apply or refer a nonprofit to us?

Contact the Collaborative at 215.587.9290 or visit the Nonprofit page of our website, www.cdesignc.org, for a downloadable grant application.

next steps

News from past recipients of the Collaborative's pro bono preliminary design services

The Pennsylvania Housing Finance Agency has approved an allocation of \$11 million through its Low Income Housing Tax Credit Program to Mount Tabor Community Education and Economic Development Corporation for its Cyber Village Housing for Seniors. The conceptual design for the development – over 70 apartment units and retail, a computer facility, and meeting space in North Philadelphia – was completed through the Collaborative by firm volunteer Becker Winston Architects in 2005. Becker Winston Architects was commissioned to complete the project.

Cedar Park Neighbors Community Association celebrated the groundbreaking for public improvements to West Philadelphia's Cedar Park in

September 2006. The community group used the Collaborative's conceptual site plan to present their vision for a better park, guide \$165,000 in capital improvements by the City of Philadelphia, and raise nearly \$50,000 in grants from the Citizens Bank Foundation, the Pennsylvania Horticultural Society, the University City District, the Pennsylvania Department of Community and Economic Development, and the Fairmount Park Trust for new signage, restoration of a war memorial, and landscaping. Last month, the group received an additional \$100,000 state grant for Phase 2: the installation of playground equipment.

The Commonwealth of Pennsylvania awarded Narberth Community Library a \$164,000 Keystone Grant for accessibility improvements and expansion.

Brawer and Hauptman Architects, who volunteered their expertise on this Collaborative project in 2004, were commissioned by the library to complete the project. The project went out to bid in July 2006.

Tabor Children's House, Inc. received a Bucks County Community Development Block Grant and additional funding through the Grundy Foundation and the Nonprofit Finance Fund to renovate space for its preschool program. The Collaborative assisted the Doylestown-based childcare provider in planning for the relocation of its preschool program from a basement location to three new, light-filled classrooms on the second floor of its facility.

Share your success stories! Send updates to Linda Dottor at Linda@cdesignc.org.



Big Crowd – Four lanes of Ballinger bowlers



Lively 300 Game Leaguers – Hellyer Berman Lewis



Kling's Team Superfreak



Lager Raabe Skafte Landscape Architecture's Flaming-O's

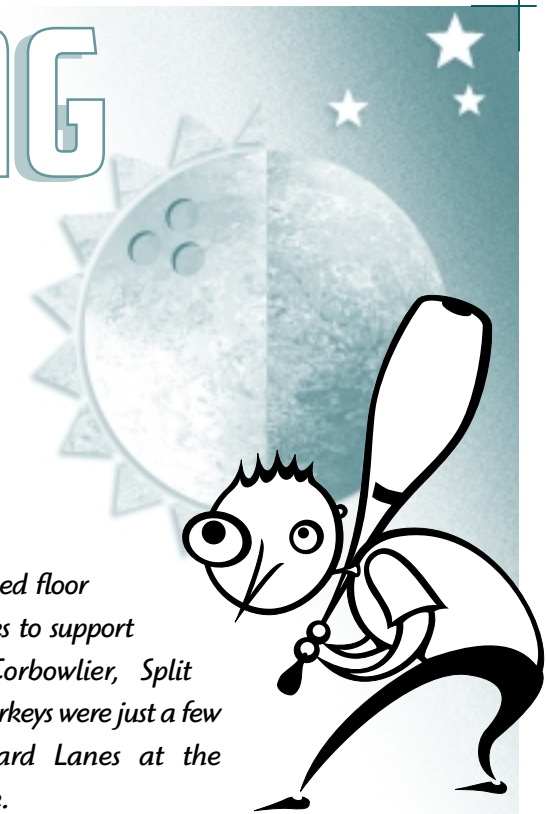


Muscling in... spg3's Subsivusaum Pineusaum Globusim 3 team



Life's a masquerade for the Terra Studio/BluPath Design.

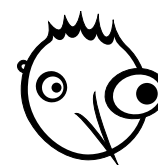
BOWLING BALL 2006



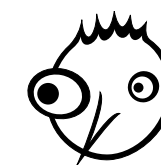
Over 300 design professionals and friends swapped floor plans and hard hats for strikes and bowling shoes to support the Community Design Collaborative. LeCorbowlier, Split Happens, the Rococos, and the Blue Hammer Turkeys were just a few of the teams who ruled the AMF Boulevard Lanes at the Collaborative's 10th Annual Bowling Ball in June.

Thanks to our eighty lane sponsors and donors, this year's Bowling Ball raised \$25,000 in operating funds for the Collaborative.

300 GAME LEAGUE AIA Philadelphia • Duffield Associates • Hellyer Berman Lewis, Inc. • Michelle Robinson Architects • Nason Construction • O'Donnell & Naccarato **TEN PIN LEAGUE** AK Architecture, LLC • AMF Boulevard Lanes • Ballinger • Bruce E. Brooks and Associates • D'Lauro & Rodgers • Hillier Architecture • The Lighting Practice • Margot Sklar & Charles Morris • Service Point USA • Smith Kolo • Thornton Tomasetti Group • Wallace Roberts & Todd, LLC **TOP SPIN TEAMS** Advanced Office Environments • AIA Bookstore & Design Center • AP3C • Ark Creatives/RW Larson Associates • Atkin Olshin Lawson-Bell • Anthony Bracali Architecture, LLC • Jeffery M. Brown Associates • Becker & Frondorf • Becker Winston Architects • Blackney Hayes Architects • BluPath Design, Inc. • Bohlin Cywinski Jackson • CDA & I Architecture and Interiors, Ltd. • Patrice Carroll • Cenero • Cope Linder • CVM Engineers • Francis Cauffman Foley Hoffmann, Architects • Gould Yaffe and Golden • Hunter Roberts Construction Corp. • Phillip Jordan Architects • Klehr, Harrison, Harvey, Branzburg & Ellers • Kling • Krieger + Associates, Architects • Lager Raabe Skafte • Paul Marcus • Susan Maxman & Partners • McGillin Architecture, Inc. • Pennoni Associates, Inc. • Pennsylvania Economy League • Laura Raymond • Seligsohn Soens Hess • Spg3 Architects • Terra Studio • University of Pennsylvania Facilities and Real Estate Services • Venturi, Scott Brown and Associates • Janice Woodcock • Wortley/Poole • XL Design Professional **SPARES** Dan Bosin Associates • Brawer & Hauptman, Architects • Knapp Masonry LLC • Richard Maimon & Susan Segal • Kay and Ed Miller • Brad Segall • Heidi Segall Levy • Schoor Depalma Community Foundation **RAFFLE PRIZE SPONSORS** Advanced Office Environments/Knoll • AIA Bookstore and Design Center • AMF Boulevard Lanes • Aveda • Cenero • Corporate Facilities, Inc. • Duffield Associates • Karastan/Durkan/Mohawk • Kimmel Center • Pabst Blue Ribbon • Philadelphia 76ers • Philadelphia Flyers • Philadelphia Folk Festival • Philadelphia Phillies • Reading Terminal Market • Rittenhouse Nails • Steelcase • Strikes • Yards Brewing Company



Save That Date!
SATURDAY, JUNE 23, 2007
11TH ANNUAL BOWLING BALL



BIGGER & BETTER